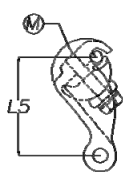
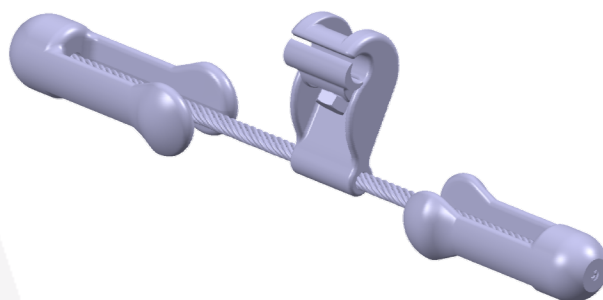
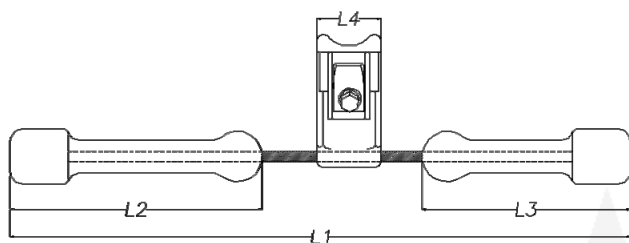




STOCKBRIDGE DAMPERS

ALDA

STOCKBRIDGE DAMPERS



No.	Part No.	Conductor Range (mm)	Dimensions (mm)					M	Min. Tightening Torque (Nm)	Weight (Kg)
			L1	L2	L3	L4	L5			
1	SD.10.10	Ø7.5 ~ Ø10	310	105	80	54	57	12	50	1.05
2	SD.10.14	Ø10 ~ Ø14	310	105	80	54	57	12	50	1.05
3	SD.35.18	Ø14 ~ Ø18	485	179	161	60	90	14	50	3.50
4	SD.35.22	Ø18 ~ Ø22	485	179	161	60	90	14	50	3.50
5	SD.35.28	Ø22 ~ Ø28	485	179	161	60	90	14	50	3.50
6	SD.35.34	Ø28 ~ Ø34	485	179	161	60	90	14	50	3.50
7	SD.58.28	Ø24 ~ Ø28	522	199	163	62	95	16	100	5.8
8	SD.58.32	Ø28 ~ Ø32	522	199	163	62	95	16	100	5.8
9	SD.70.28	Ø24 ~ Ø28	565	220	180	62	95	16	100	7.10
10	SD.70.32	Ø28 ~ Ø32	565	220	180	62	95	16	100	7.10
11	SD.70.36	Ø28 ~ Ø36	565	220	180	62	95	16	100	7.10