

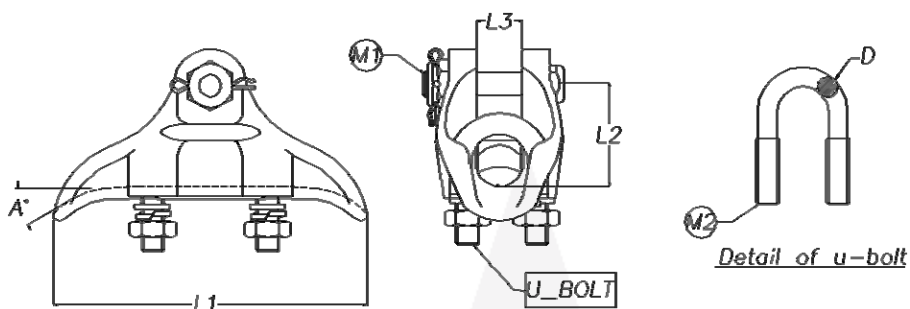


# **EARTH WIRE FITTINGS**

**ALDA**

## SUSPENSION CLAMPS

For aluminum earth wires



No.	Part No.	Conductor Range (mm)	Dimensions (mm)				A (degree)	M1	M2	Min. Breaking Strength (kN)	Min. Tightening Torque (Nm)	Weight (Kg)
			L1	L2	L3	D						
1	SU.23.300.X	Ø10 ~ Ø21	190	60	21	12.5	20	16	14	70	60	1.2

**ALDA**

**ALDA MANUFACTURING CO.**

No. 7, Maryam Alley, Hakim Highway, Tehran-Iran ■ Postal Code: 1473666751

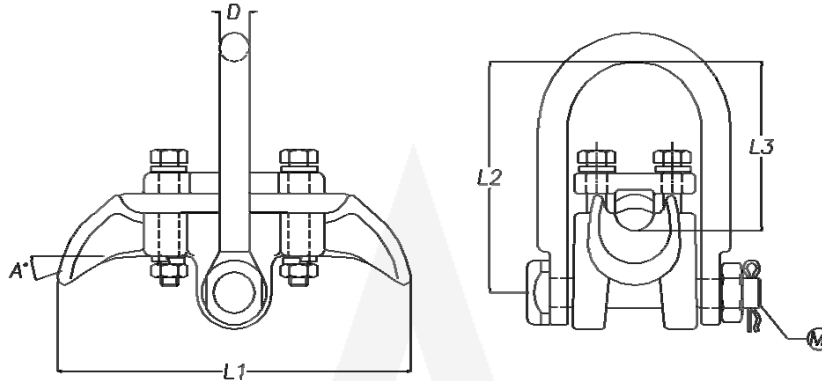
Tel: (+9821) 44003214-6 ■ Fax: (+9821) 44003217

Email: [Info@AldaCompany.com](mailto:Info@AldaCompany.com)

## SUSPENSION CLAMPS

For galvanized earth wires

Type 1

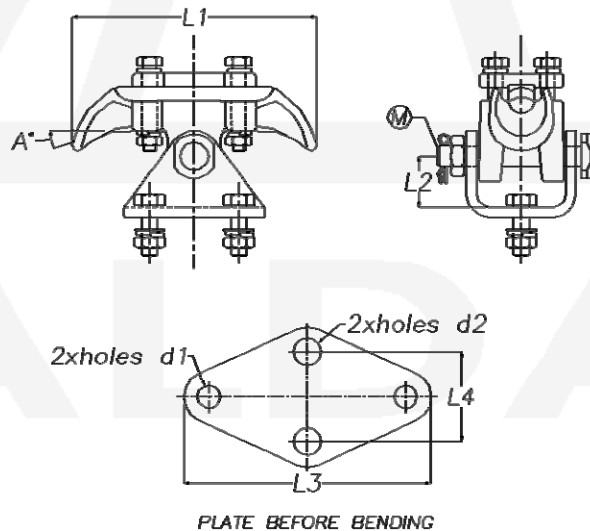


No.	Part No.	Conductor Range (mm)	Dimensions (mm)				A (degree)	M	Min. Breaking Strength (kN)	Min. Tightening Torque(Nm)	Weight (Kg)
			L1	L2	L3	D					
1	SU.18.01.ST.X	Ø12 ~ Ø21.6	191	125	91.5	16	20	16	80	50	2.75

## SUSPENSION CLAMPS

For galvanized earth wires

Type 2



No.	Part No.	Conductor Range (mm)	Dimensions (mm)						A (degree)	M	Min. Breaking Strength (kN)	Min. Tightening Torque(Nm)	Weight (Kg)
			L1	L2	L3	L4	d1	d2					
1	SU.18.02.ST.X	Ø12 ~ Ø21.6	191	40	194	70	18	22	20	16	60	50	3.23
2	SU.18.03.ST.X	Ø12 ~ Ø21.6	191	40	194	70	18	18	20	16	60	50	3.24
3	SU.18.04.ST.X	Ø12 ~ Ø21.6	191	40	194	50	18	18	20	16	60	50	3.17

**ALDA MANUFACTURING CO.**

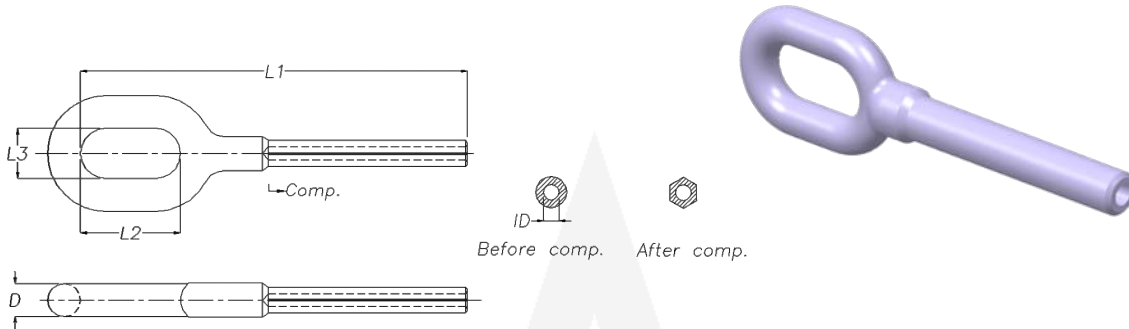
No. 7, Maryam Alley, Hakim Highway, Tehran-Iran ■ Postal Code: 1473666751

Tel: (+9821) 44003214-6 ■ Fax: (+9821) 44003217

Email: [Info@AldaCompany.com](mailto:Info@AldaCompany.com)

## COMPRESSION DEAD END CLAMPS

For alumoweld & galvanized earth wires



No.	Part No.	Conductor	Dimensions (mm)					Weight (Kg)
			L1	L2	L3	D	ID	
1	DO.13.65	PARTRIDGE CORE	194	50	25	16.5	6.5	0.44
2	DO.17.85.3	HAWK CORE	190	50	25	16.5	8.5	0.52
3	DO.17.87.2	LYNX CORE	190	50	25	16.5	8.7	0.5
4	DO.19.102.5	CANARY CORE & 7NO.8 (Ø9.8)	194	50	25	16.5	10.2	0.57
5	DO.21.105	3NO.5 (Ø9.96)	194	50	25	16.5	10.5	0.58
6	DO.21.110.5	CURLEW CORE	194	50	25	16.5	11.2	0.55
7	DO.23.115	7NO.7 (Ø11) & TEAL CORE 70mm <sup>2</sup> (Ø 10.8)	194	50	25	16.5	11.5	0.65
8	DO.23.120	80 mm <sup>2</sup> (Ø11.5)	194	50	25	16.5	12	0.65
9	DO.25.125.1	MARTIN CORE (Ø12.05) & 411mm <sup>2</sup> (Ø12)	194	50	25	16.5	12.5	0.68
10	DO.25.130	7NO.6 (Ø12.34)	194	50	25	16.5	13	0.73

Aluminum sleeves shall be provided whenever the clamp is used for alumoweld earth wires.

**ALDA MANUFACTURING CO.**

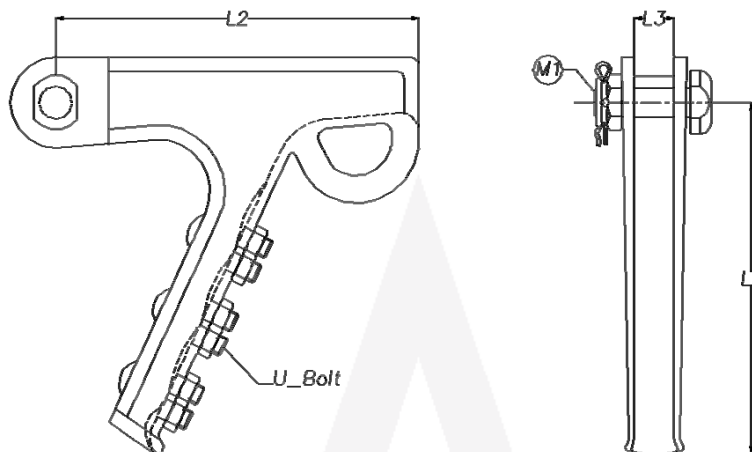
No. 7, Maryam Alley, Hakim Highway, Tehran-Iran ■ Postal Code: 1473666751

Tel: (+9821) 44003214-6 ■ Fax: (+9821) 44003217

Email: [Info@AldaCompany.com](mailto:Info@AldaCompany.com)

## BOLTED TYPE STRAIN CLAMPS

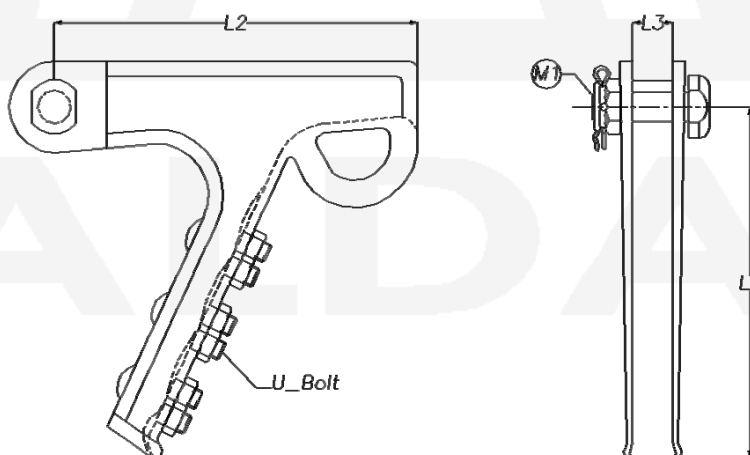
For alumoweld earth wires



No.	Part No.	Conductor Range (mm)	Dimensions (mm)			M1	U Bolt	Weight (Kg)
			L1	L2	L3			
1	DEN.10.01.AI	Ø8 ~ Ø21	128	200	22	16	M12	1.6

## BOLTED TYPE STRAIN CLAMPS

For galvanized earth wires



No.	Part No.	Conductor Range (mm)	Dimensions (mm)			M1	U Bolt	Weight (Kg)
			L1	L2	L3			
1	DEN.10.01.ST	Ø8 ~ Ø21	128	200	22	16	M12	3.145

**ALDA MANUFACTURING CO.**

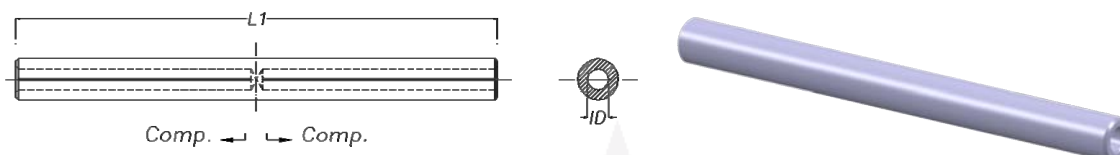
No. 7, Maryam Alley, Hakim Highway, Tehran-Iran ■ Postal Code: 1473666751

Tel: (+9821) 44003214-6 ■ Fax: (+9821) 44003217

Email: [Info@AldaCompany.com](mailto:Info@AldaCompany.com)

## MID SPAN JOINTS

For alumoweld & galvanized earth wires



No.	Part Name	Dimensions (mm)		Weight (Kg)	Conductor
		L1	ID		
1	MS.06.00	180	6.5	0.14	PARTRIDGE CORE
2	MS.05.09.4	200	8.5	0.27	HAWK CORE
3	MS.04.11.1	200	8.7	0.26	LYNX CORE
4	MS.08.03.4	230	10.2	0.31	CANARY CORE & 7 NO.8 (Ø9.8)
5	MS.09.96.1	220	10.5	0.45	3 NO.5 (Ø9.96)
6	MS.08.15.4	240	11.2	0.47	CURLEW CORE
7	MS.04.20	200	11.5	0.54	7 NO.7 (Ø11) & TEAL CORE 70mm <sup>2</sup> (Ø10.8)
8	MS.12.05	220	12.5	0.64	MARTIN CORE

Aluminum sleeves shall be provided whenever the clamp is used for alumoweld earth wires.

**ALDA MANUFACTURING CO.**

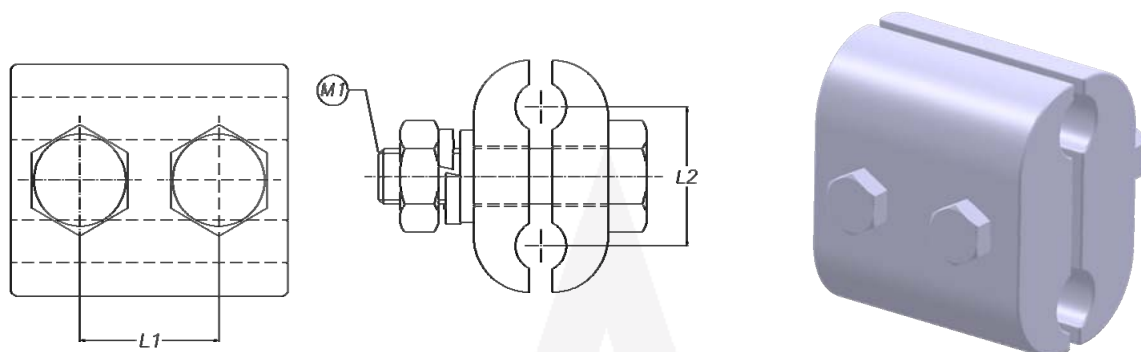
No. 7, Maryam Alley, Hakim Highway, Tehran-Iran ■ Postal Code: 1473666751

Tel: (+9821) 44003214-6 ■ Fax: (+9821) 44003217

Email: [Info@AldaCompany.com](mailto:Info@AldaCompany.com)

## PARALLEL GROOVE CLAMPS

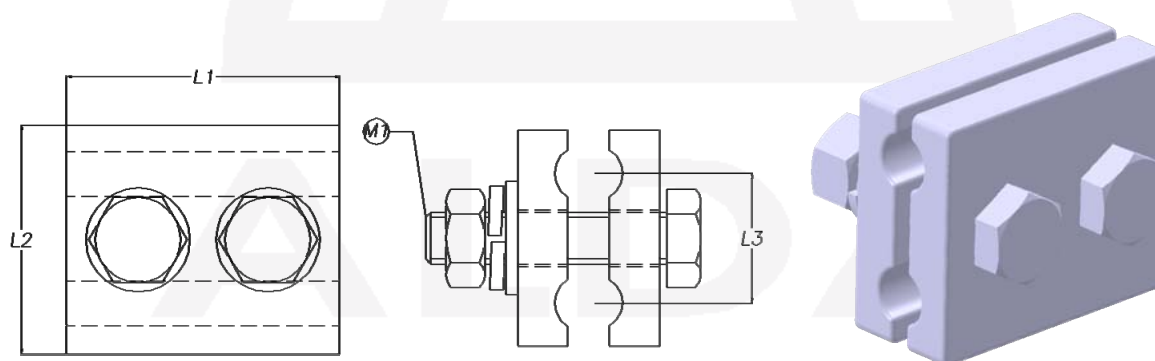
For aluminum & alumoweld earth wires



No.	Part No.	Conductor Range (mm)	Dimensions (mm)		M1	Weight (Kg)
			L1	L2		
1	PG.90.90.3	Ø8 ~ Ø12.5	30	30	10	0.25

## PARALLEL GROOVE CLAMPS

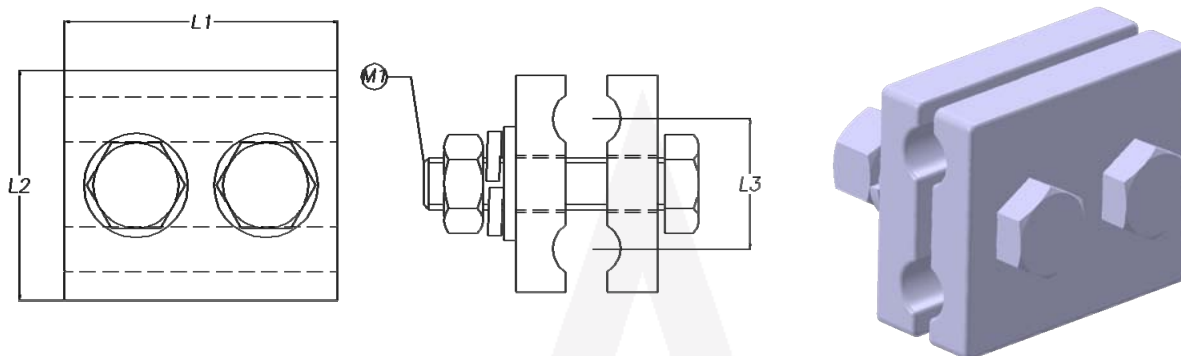
For copper earth wires



No.	Part No.	Conductor Range (mm)	Dimensions (mm)			M1	Weight (Kg)
			L1	L2	L3		
1	PG.12.12.BR	Ø7.5 ~ Ø12.5	60	60	30	12	0.71

## PARALLEL GROOVE CLAMPS

For galvanized earth wires

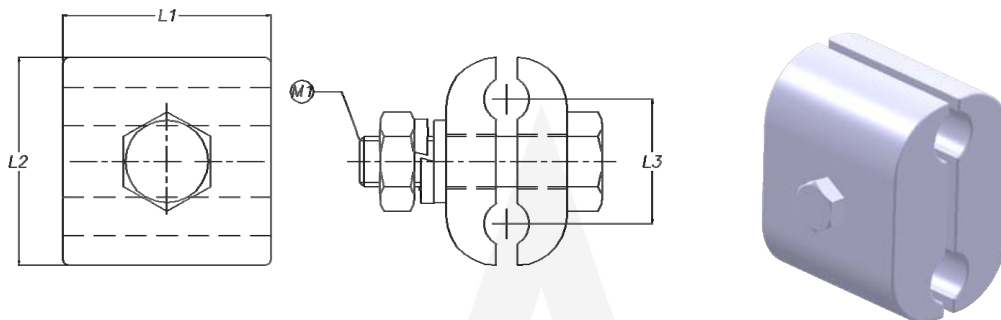


No.	Part No.	Conductor Range (mm)	Dimensions (mm)			M1	Weight (Kg)
			L1	L2	L3		
1	PG.12.12.ST	Ø8 ~ Ø12.5	60	50	30	12	0.63

## TOWER BONDING CLAMPS

For aluminum & alumoweld earth wires

Type 1

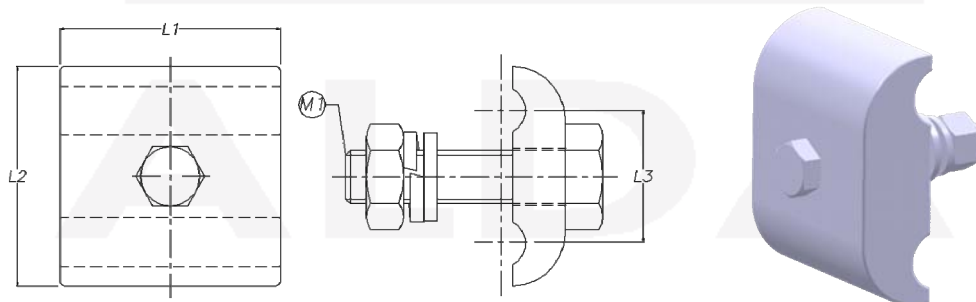


No.	Part No.	Conductor Range (mm)	Dimensions (mm)			M1	Weight (Kg)
			L1	L2	L3		
1	PG.80.80.AL	Ø7.5 ~ Ø12.5	50	50	30	10	0.18

## TOWER BONDING CLAMPS

For aluminum & alumoweld earth wires

Type 2



No.	Part No.	Conductor Range (mm)	Dimensions (mm)			M1	Weight (Kg)
			L1	L2	L3		
1	PG.80.80.1.AL	Ø8.5 ~ Ø10.8	50	50	30	12	0.15

**ALDA MANUFACTURING CO.**

No. 7, Maryam Alley, Hakim Highway, Tehran-Iran ■ Postal Code: 1473666751

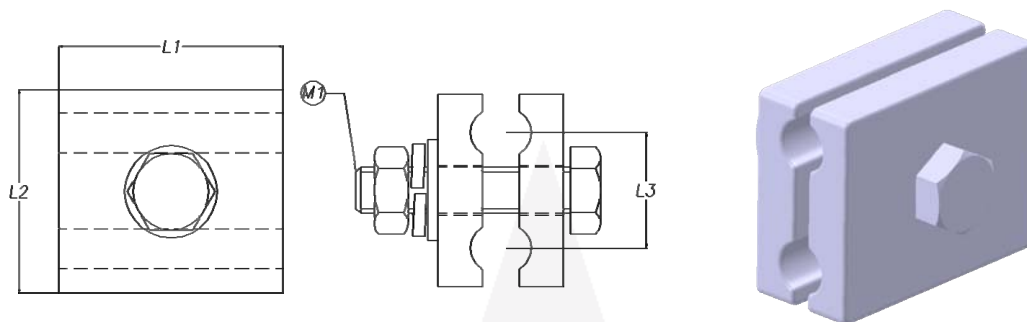
Tel: (+9821) 44003214-6 ■ Fax: (+9821) 44003217

Email: [Info@AldaCompany.com](mailto:Info@AldaCompany.com)

## TOWER BONDING CLAMPS

For copper earth wires

Type 1

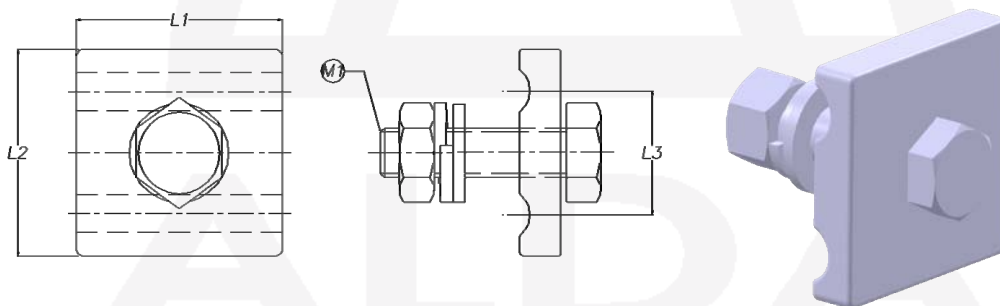


No.	Part No.	Conductor Range (mm)	Dimensions (mm)			M1	Weight (Kg)
			L1	L2	L3		
1	PG.80.80.BR	Ø7.5 ~ Ø12.5	60	60	30	12	0.58

## TOWER BONDING CLAMPS

For copper earth wires

Type 2

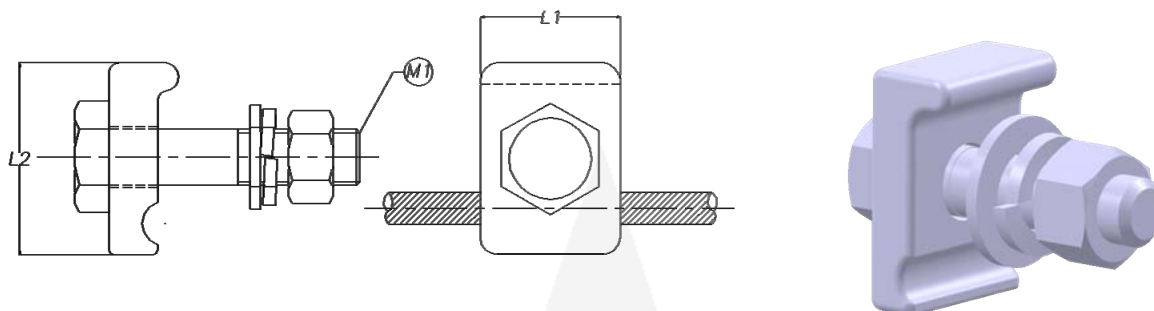


No.	Part No.	Conductor Range (mm)	Dimensions (mm)			M1	Weight (Kg)
			L1	L2	L3		
1	PG.80.80.1.BR	Ø7.5 ~ Ø12.5	60	60	30	12	0.33

## TOWER BONDING CLAMPS

For copper earth wires

Type 3

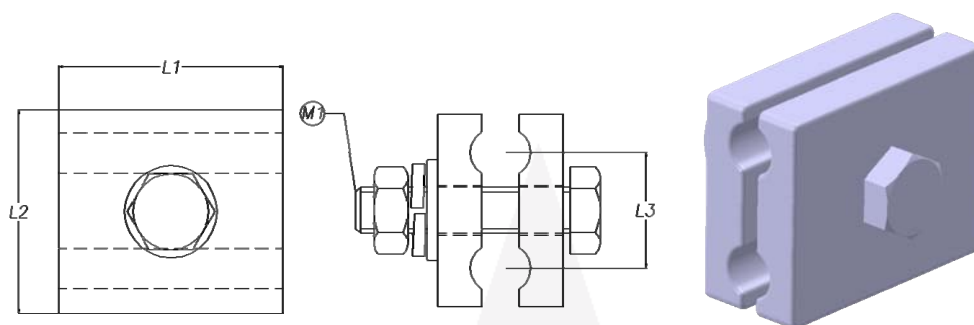


No.	Part No.	Conductor Range (mm)	Dimensions (mm)		M1	Weight (Kg)
			L1	L2		
1	TC.105.1.CA	Ø7.5-Ø12.5	40	55	12	0.3

## TOWER BONDING CLAMPS

For galvanized earth wires

Type 1

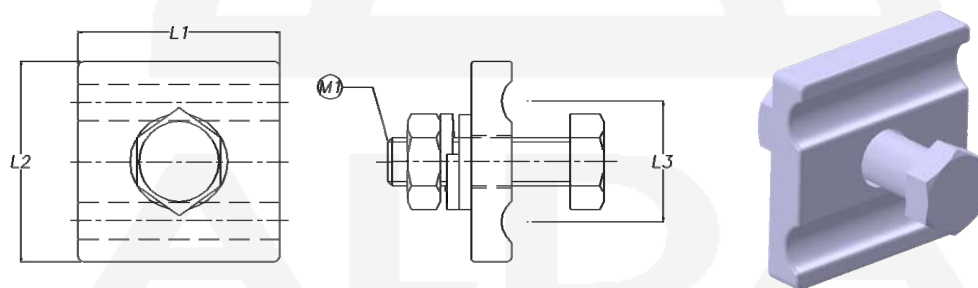


No.	Part No.	Conductor Range (mm)	Dimensions (mm)			M1	Weight (Kg)
			L1	L2	L3		
1	PG.80.80.ST	Ø7.5 ~ Ø12.5	50	50	30	12	0.4

## TOWER BONDING CLAMPS

For galvanized earth wires

Type 2

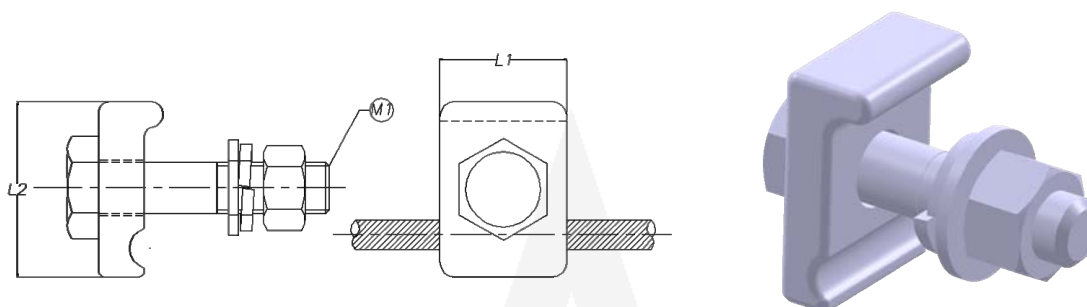


No.	Part No.	Conductor Range (mm)	Dimensions (mm)			M1	Weight (Kg)
			L1	L2	L3		
1	PG.80.80.1.ST	Ø7.5 ~ Ø12.5	50	50	29	12	0.25

## TOWER BONDING CLAMPS

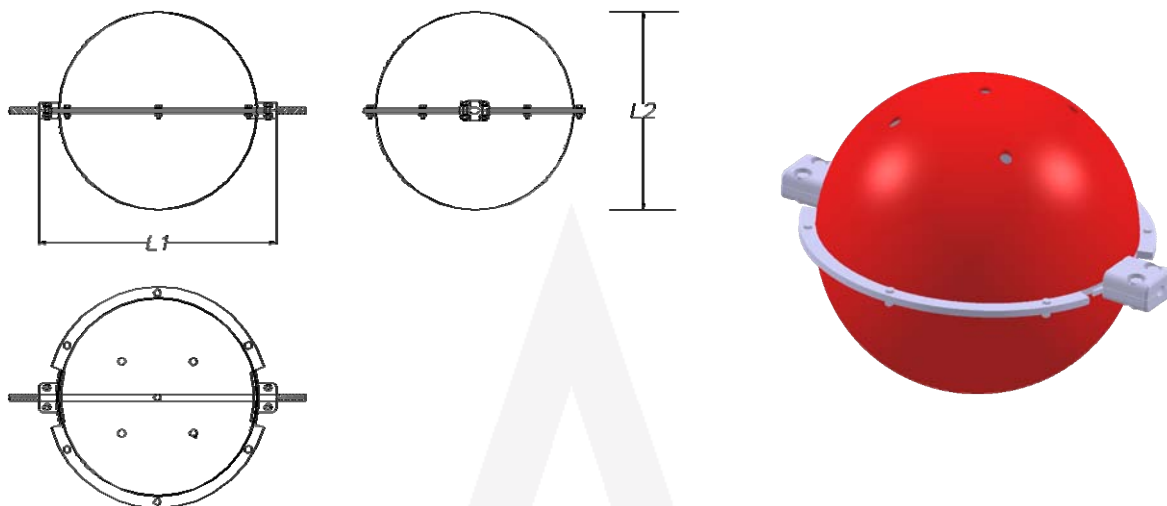
For galvanized earth wires

Type 3



No.	Part No.	Conductor Range (mm)	Dimensions (mm)		M1	Weight (Kg)
			L1	L2		
1	TC.105.1	Ø7.5 ~ Ø12.5	40	55	16	0.39

**WARNING SPHERES**



No.	Part No.	Conductor Range (mm)	Dimensions (mm)		Weight (Kg)
			L1	L2	
1	WB.50.10	Ø7.5 ~ Ø11	645	500	3.54
2	WB.50.15	Ø11 ~ Ø16	645	500	3.54
3	WB.60.10	Ø7.5 ~ Ø11	745	600	4.04
4	WB.60.15	Ø11 ~ Ø16	745	600	4.04

**ALDA**