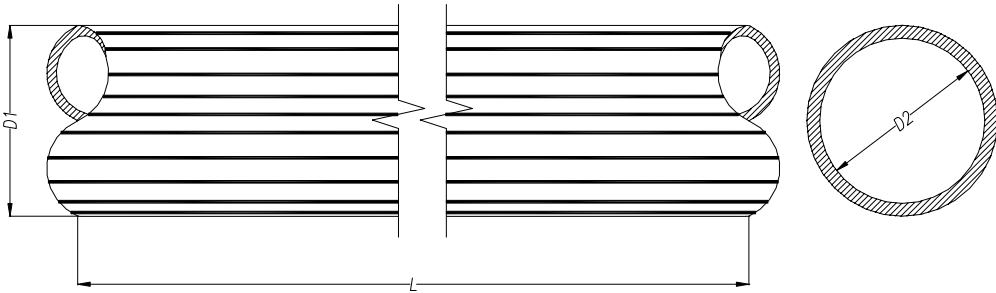




BUSBAR

PART No.	Dimensions in mm			Net Weight
	Φ		L	
	D1	D2		
Fig. 1				
BUS-250/6	250	238	L	
BUS-200/6	200	188	L	
BUS-160/6	160	148	L	
BUS-120/10	120	100	L	
BUS-120/6	120	108	L	
BUS-100/6	100	88	L	
BUS-80/10	80	60	L	
BUS-80/8	80	64	L	
BUS-80/6	80	68	L	
BUS-60/6	60	48	L	
BUS-50/8	50	34	L	





**CORONA BELL
TYPE I**

PART No.	Dimensions in mm			Net Weight Kg / unit.
	Φ		S	
	D1	D2		
Fig. 1				
C50CB	50	40	20	
C60CB/C	63	51	20	
C80CB	80	68	25	
C100CB	100	88	25	
C120CB	120	108	40	
C160CB	160	148	58	
C250CB	250	238	60	
C200CB188	200	188	60	

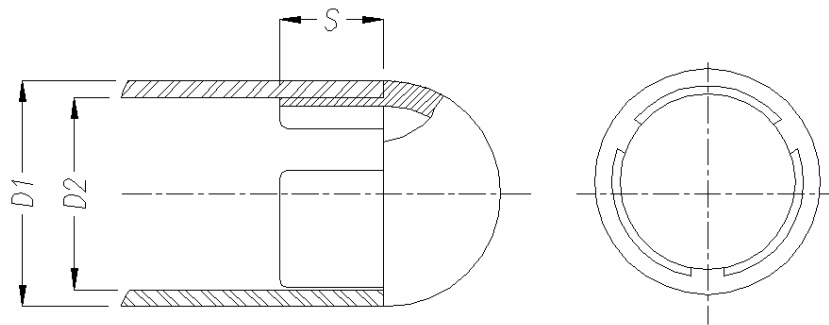


Fig. 1



CORONA BELL
TYPE II

PART No.	Dimensions in mm					Net Weight
	Φ			S	Bolt M	Kg / unit.
	D1	D2	D3			
Fig. 2						
C80CBDM229	80	68	18-22.9	40	10	
C120CBDM229	120	108	18-22.9	42	10	
C120CBDM229	120	104	18-22.9	58	10	
C120CBDM260	120	104	23.1-26.0	42	10	
C150CBDM229	150	138	18-22.9	58	10	
C160CBDM229	160	148	18-22.9	58	10	
C160CBDM260	160	148	23.0-26.0	58	10	
C160CBDM300	160	148	28.1-30.0	58	10	
C160CBDM335	160	148	28.1-33.5	40	10	
C250CBDM335	250	238	28.1-33.5	60	10	

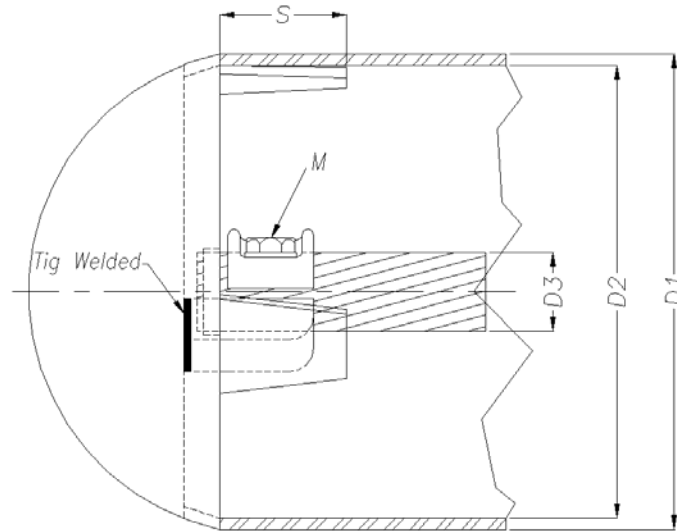


Fig. 2



**CORONA BELL
TYPE III**

PART No.	Dimensions in mm					Net Weight
	Φ			S1	S2	Kg / unit.
	D1	D2	D3			
Fig. 3						
C80CB16PDM	80	68	12-16	25	100	
C80CB229PDM	80	68	18-22.9	25	100	
C100CB229PDM	100	88	18-22.9	25	130	

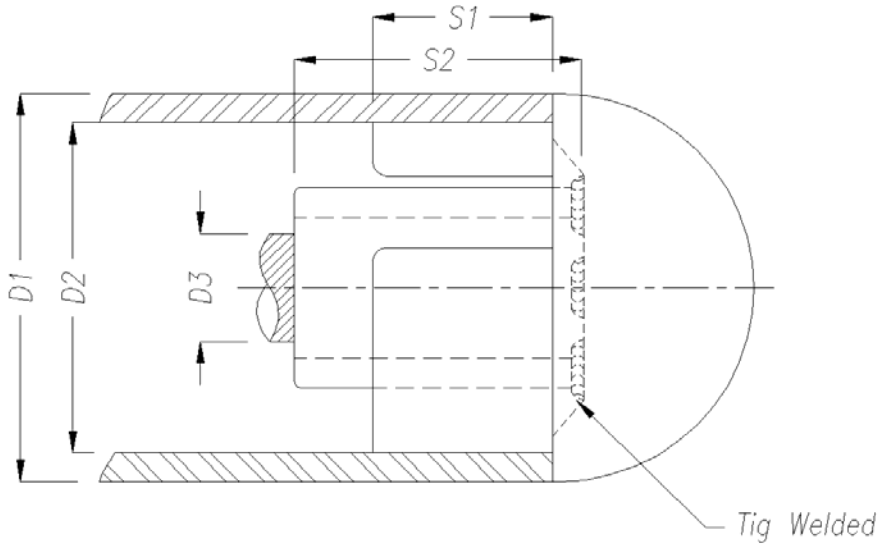


Fig. 3



END CAP
TYPE I

PART No.	Dimensions in mm					a degree	Net Weight Kg / unit.
	Φ			d	Bolt M		
	D1	D2	D3				
Fig. 1							
C65EC	65	48			10	120	
C80EC	80	63	44	11	10	120	
C85EC	85	71			10	120	
C100EC	100	88			10	120	
C102EC/C	102	86			10	120	
C120EC	120	102			10	120	
C150EC	150				10	120	
C160EC	160	132			10	120	
C200EC	200	180			10	120	
C250EC	250				10	120	

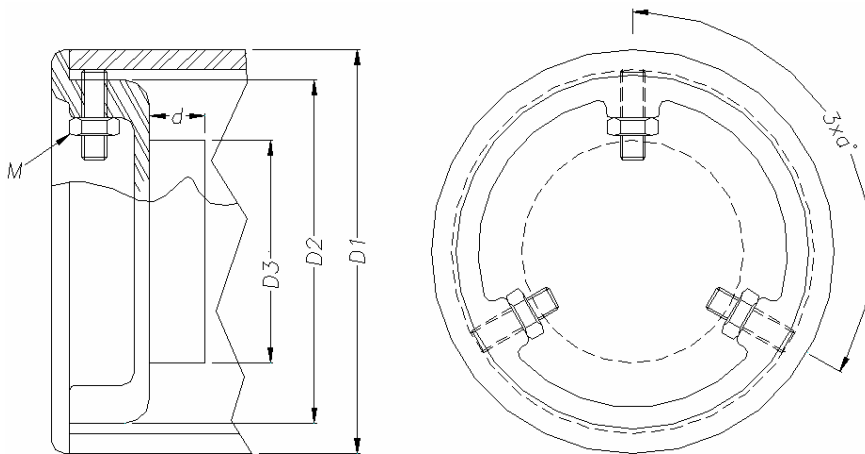


Fig. 1



END CAP
TYPE II

PART No.	a Dimensions in mm								Net Weight	
	Φ				E1	E2	d	Bolt M	Kg / unit.	
	D1	D2	D3	D4						
Fig. 2										
C50EC	50	36	33	21	20	24	7	8		
C60EC	60	46	43		20	24		8		
C60EC/C	63	48	46		20	24		8		

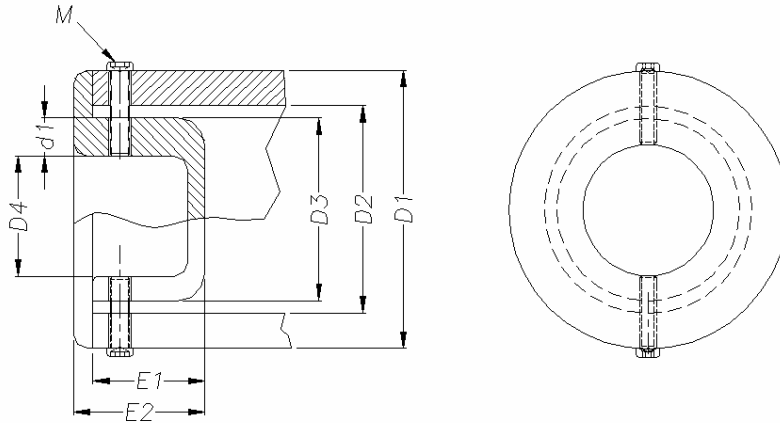


Fig. 2



**END CAP with damping roap
TYPE III**

PART No.	Dimensions in mm							Net Weight	
	Φ					d	Bolt M	Kg / unit.	
	D1	D2	D3	D4	D5				
Fig. 3									
C80EC16PDM	80	65-68	63	34	12-16	100	10		
C80EC21PDM	80	65-68	63	34	17.5-21.0	100	10		
C80EC229PDM	80	65-68	63		18.2-22.9	100	10		
C80EC229PDM	80	65-68	63		18-22.9	100	10		
C80EC280PDM	80	65-68	63		26.1-28.0	100	10		
C80EC322PDM	80	65-68	63		30.1-32.2	100	10		
C80EC300PDM	80	65-68	63		28.1-300.0	100	10		

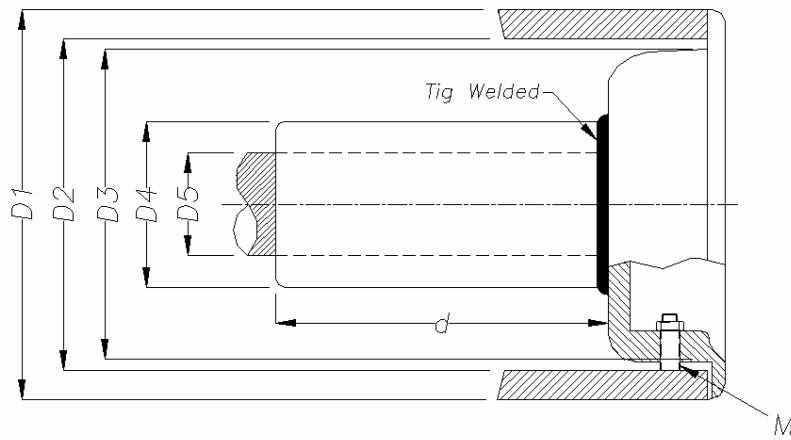


Fig. 3



END CAP with damping roap
TYPE IV

PART No.	Dimensions in mm					Bolt		Bimetal	Net Weight Kg / unit.
	D1	Φ		d1	d2	M1	M2		
Fig. 4									
C80EC280DM	100	86	26.1-28.0	52	82	10	10		
C100EC229DM	100	86	18.2-22.9	52	82	10	10		
C100EC361DM	100	90	32.3-36.1	52	82	10	10		
C120EC229DM	120	104-108	18.1-22.9			10	10		
C120EC300DM	120	104-108	28.1-33.5			10	10		
C120EC322DM	120	104-108	26.1-32.2			10	10		
C120EC335DM	120	104-108	28.1-33.5			10	10		
C150EC12DM	150	128	8.5-12			10	10		
C150EC12DM	150	138	8.5-12			10	10		
C150EC229DM	150	125-142	18.1-22.9			10	10		
C150EC338DM	150	128	28.1-33.5			10	10		
C150EC335DM	150	138	28.1-33.5			10	10		
C160EC229DM	160	134-148	18.1-22.9	52	84	10	10		
C160EC280DM	160	134-148	26.1-28.0	52	84	10	10		
C160EC280DMB	160	134-148	26.1-28.0	52	84	10	10	•	
C160EC300DM	160	135-152	28.1-30.0	52	84	10	10		
C160EC335DM	160	135-152	32.2-33.5	52	84	10	10		
C200EC12DM	200	188	8.5-12			10	10		
C200EC229DM	200	188	18.2-22.9	52	82	10	10		
C200EC335DM	200	188	28.1-33.5	52	82	10	10		
C200EC335DMB	200	155	28.1-33.5	52	82	10	10	•	
C250EC335DM	250	232-240	28.1-33.5	52	82	10	10		

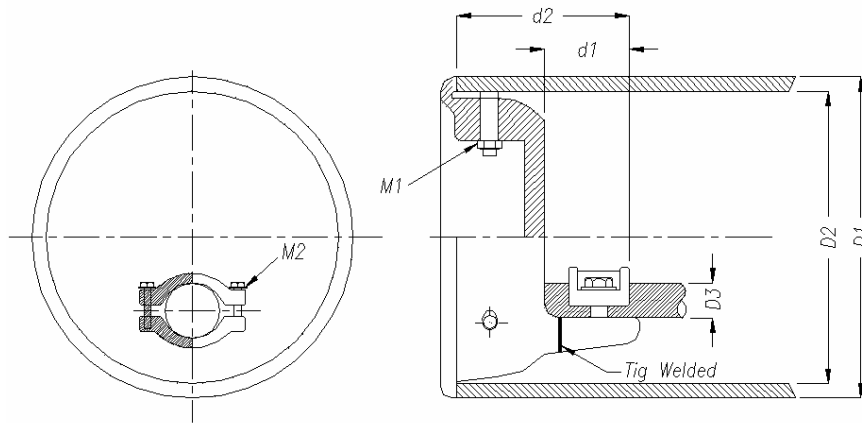


Fig. 4



STOP TUBE

PART No.	Dimensions in mm					Bolt	Net Weight
	d1	d2	d3	d4	d5	M	Kg / unit.
Fig. 1							
CEL10	42	20	20	22	<12	10	

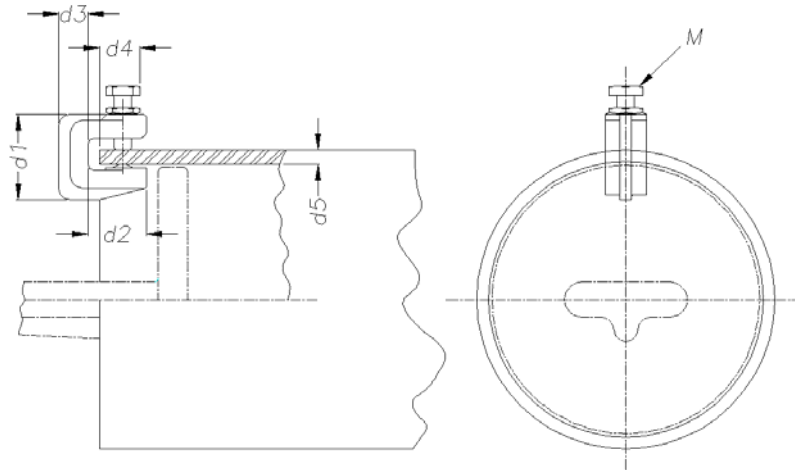


Fig. 1



WELDING JOINT
TYPE I

PART No.	Dimensions in mm				Net Weight Kg / unit.
	Φ		L	S	
	D1	D2			
Fig. 1					
WJ.80/68	67	44	150	10	
WJ.100/88	86	63	150	10	
WJ.120/108	107	80	150	10	
WJ.160/148	146	117	240	10	
WJ.160/148/C	146	117	640	10	
WJ.200/188	186	157	280	10	
WJ.250/238	236	207	280	10	

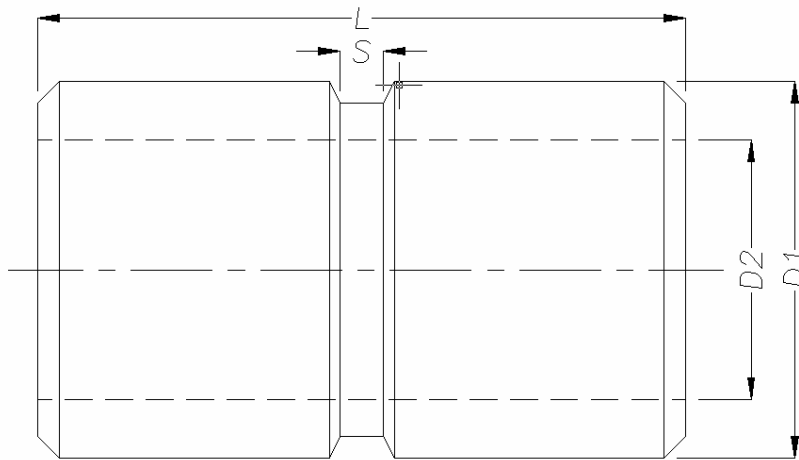


Fig. 1



**WELDING JOINT
TYPE II**

PART No.	Dimensions in mm					Net Weight Kg / unit.
	Φ			L	S	
	D1	D2	D3			
Fig. 2						
WJ.100/88-WJ.80/68	86	67	44	150	10	
WJ.150/138-WJ.160/148	146	136	107	240	10	

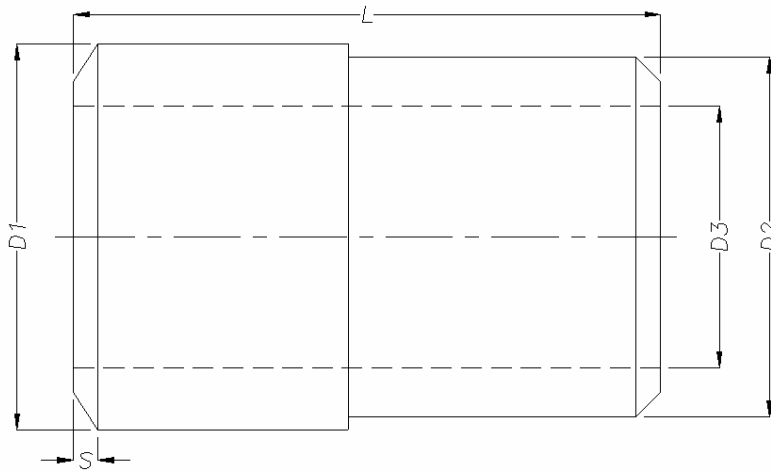


Fig. 2



WIRE DAMPER CONNECTOR

PART No.	Dimensions in mm						Net Weight Kg / unit.
	Φ			L1	L2	L3	
	D1	D2	D3				
C200WWD32.6	200	188	32.6	220	150	340	
C160WWD22.5	160	148	22.5	220	150	340	
C120WWD22.5	120	108	22.5	200	135	267	
C100WWD22.5	100	88	22.5	200	135	267	
C100WWD20.3	100	88	20.3	200	135	267	
C100WWD17.5	100	88	17.5	200	135	267	
C80WWD22.5	80	68	22.5	200	135	267	
C80WWD20.3	80	68	20.3	200	135	267	
C80WWD15.8	80	68	15.8	200	135	267	
C80WWD15.7	80	68	15.7	200	135	267	

