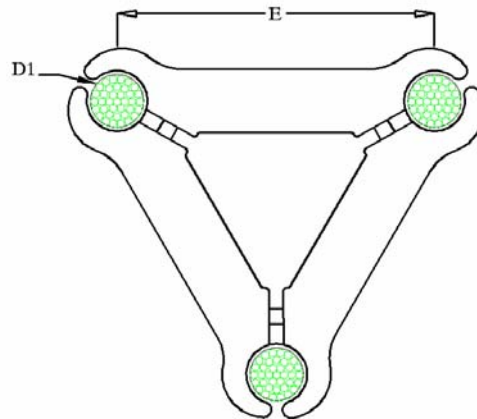




**TRIANGULAR SPACER**

PART No.	Dimensions in mm		Net Weight Kg / unit.
	Ø	E	
	D		
<b>Fig. 1</b>			
C 196 SP 3-20 T	18.0- 19.6	200	
C 214 SP 3-20 T	19.7- 21.4	200	
C 229 SP 3-20 T	21.5- 22.9	200	
C 244 SP 3-20 T	23.0- 24.4	200	
C 260 SP 3-20 T	24.5- 26.0	200	
C 280 SP 3-20 T	26.1- 28.0	200	
C 300 SP 3-20 T	28.1- 30.0	200	
C 322 SP 3-20 T	30.1- 32.2	200	
C 335 SP 3-20 T	32.3- 33.5	200	
C 350 SP 3-20 T	33.6- 35.0	200	
C 361 SP 3-20 T	35.1- 36.1	200	
C 383 SP 3-20 T	36.2- 38.3	200	
C 400 SP 3-20 T	38.4- 40.0	200	
C 415 SP 3-20 T	40.1- 41.5	200	
C 196 SP 3-10 T	18.0- 19.6	100	
C 214 SP 3-10 T	19.7- 21.4	100	
C 229 SP 3-10 T	21.5- 22.9	100	
C 244 SP 3-10 T	23.0- 24.4	100	
C 260 SP 3-10 T	24.5- 26.0	100	
C 280 SP 3-10 T	26.1- 28.0	100	
C 300 SP 3-10 T	28.1- 30.0	100	
C 322 SP 3-10 T	30.1- 32.2	100	
C 335 SP 3-10 T	32.3- 33.5	100	
C 350 SP 3-10 T	33.6- 35.0	100	
C 361 SP 3-10 T	35.1- 36.1	100	
C 383 SP 3-10 T	36.2- 38.3	100	
C 400 SP 3-10 T	38.4- 40.0	100	
C 415 SP 3-10 T	40.1- 41.5	100	



**Fig. 1- TRIANGULAR SPACER**



TWIN SPACER-TYPE I

PART No.	Dimensions in mm			Net Weight Kg / unit.
	Ø	E	M	
	D			
<b>Fig. 2</b>				
C 196 SP 10	18.0- 19.6	100	10	
C 214 SP 10	19.7- 21.4	100	10	
C 229 SP 10	21.5- 22.9	100	10	
C 244 SP 10	23.0- 24.4	100	10	
C 260 SP 10	24.5- 26.0	100	10	
C 280 SP 10	26.1- 28.0	100	10	
C 300 SP 10	28.1- 30.0	100	10	
C 322 SP 10	30.1- 32.2	100	10	
C 335 SP 10	32.3- 33.5	100	10	
C 350 SP 10	33.6- 35.0	100	10	
C 361 SP 10	35.1- 36.1	100	10	
C 383 SP 10	36.2- 38.3	100	10	
C 400 SP 10	38.4- 40.0	100	10	
C 415 SP 10	40.1- 41.5	100	10	

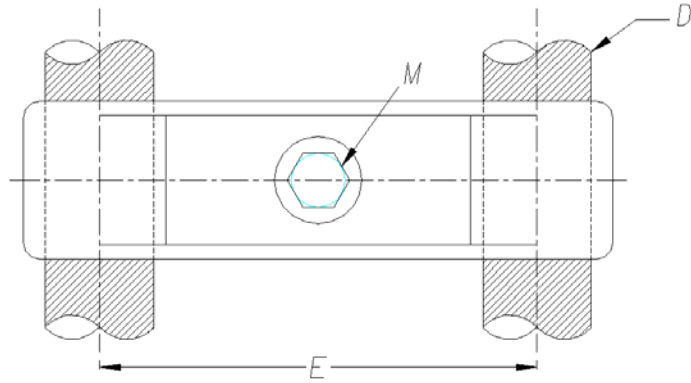
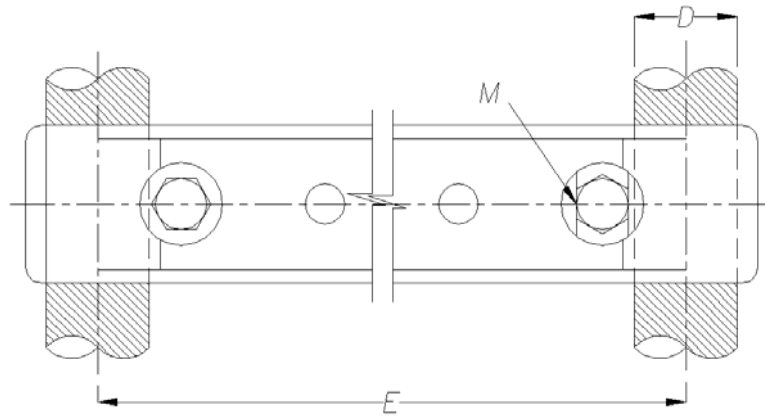


Fig. 2- TWIN SPACER-TYPE I



**TWIN SPACER-TYPE II**

PART No.	Dimensions in mm			Net Weight Kg / unit.
	Ø	E	M	
	D			
<b>Fig. 3</b>				
C 196 SP 20	18.0- 19.6	200	10	
C 214 SP 20	19.7- 21.4	200	10	
C 229 SP 20	21.5- 22.9	200	10	
C 244 SP 20	23.0- 24.4	200	10	
C 260 SP 20	24.5- 26.0	200	10	
C 280 SP 20	26.1- 28.0	200	10	
C 300 SP 20	28.1- 30.0	200	10	
C 322 SP 20	30.1- 32.2	200	10	
C 335 SP 20	32.3- 33.5	200	10	
C 350 SP 20	33.6- 35.0	200	10	
C 361 SP 20	35.1- 36.1	200	10	
C 383 SP 20	36.2- 38.3	200	10	
C 400 SP 20	38.4- 40.0	200	10	
C 415 SP 20	40.1- 41.5	200	10	

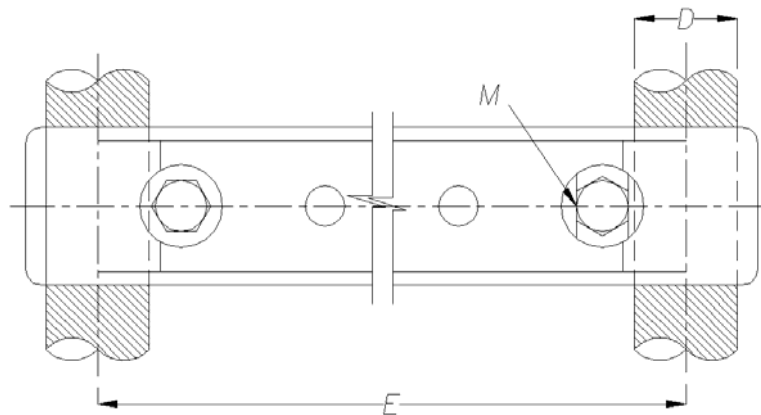


**Fig. 3- TWIN SPACER-TYPE II**



**TWIN SPACER-TYPE III**

PART No.	Dimensions in mm			Net Weight Kg / unit.
	Ø D	E	M	
<b>Fig. 4</b>				
C 196 SP 40	18.0- 19.6	400	10	
C 214 SP 40	19.7- 21.4	400	10	
C 229 SP 40	21.5- 22.9	400	10	
C 244 SP 40	23.0- 24.4	400	10	
C 260 SP 40	24.5- 26.0	400	10	
C 280 SP 40	26.1- 28.0	400	10	
C 300 SP 40	28.1- 30.0	400	10	
C 322 SP 40	30.1- 32.2	400	10	
C 335 SP 40	32.3- 33.5	400	10	
C 350 SP 40	33.6- 35.0	400	10	
C 361 SP 40	35.1- 36.1	400	10	
C 383 SP 40	36.2- 38.3	400	10	
C 400 SP 40	38.4- 40.0	400	10	
C 415 SP 40	40.1- 41.5	400	10	



**Fig. 4- TWIN SPACER-TYPE III**



Spacer for triple linear conductor

PART No.	Dimensions in mm			Net Weight Kg / unit.
	Ø	E	M	
	D			
<b>Fig. 5</b>				
C 196 SP3-40	18.0- 19.6	200	10	
C 214 SP3-40	19.7- 21.4	200	10	
C 229 SP3-40	21.5- 22.9	200	10	
C 244 SP3-40	23.0- 24.4	200	10	
C 260 SP3-40	24.5- 26.0	200	10	
C 280 SP3-40	26.1- 28.0	200	10	
C 300 SP3-40	28.1- 30.0	200	10	
C 322 SP3-40	30.1- 32.2	200	10	
C 335 SP3-40	32.3- 33.5	200	10	
C 350 SP3-40	33.6- 35.0	200	10	
C 361 SP3-40	35.1- 36.1	200	10	
C 383 SP3-40	36.2- 38.3	200	10	
C 400 SP3-40	38.4- 40.0	200	10	
C 415 SP3-40	40.1- 41.5	105	10	
C 196 SP3-20	18.0- 19.6	105	10	
C 214 SP3-20	19.7- 21.4	105	10	
C 229 SP3-20	21.5- 22.9	105	10	
C 244 SP3-20	23.0- 24.4	105	10	
C 260 SP3-20	24.5- 26.0	105	10	
C 280 SP3-20	26.1- 28.0	105	10	
C 300 SP3-20	28.1- 30.0	105	10	
C 322 SP3-20	30.1- 32.2	105	10	
C 335 SP3-20	32.3- 33.5	105	10	
C 350 SP3-20	33.6- 35.0	105	10	
C 361 SP3-20	35.1- 36.1	105	10	
C 383 SP3-20	36.2- 38.3	105	10	
C 400 SP3-20	38.4- 40.0	105	10	
C 415 SP3-20	40.1- 41.5	105	10	

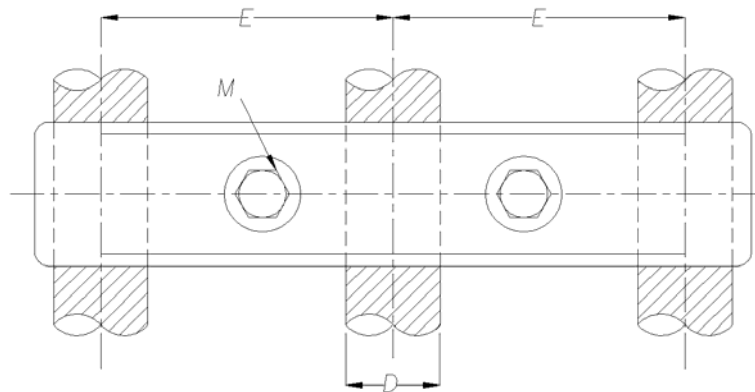
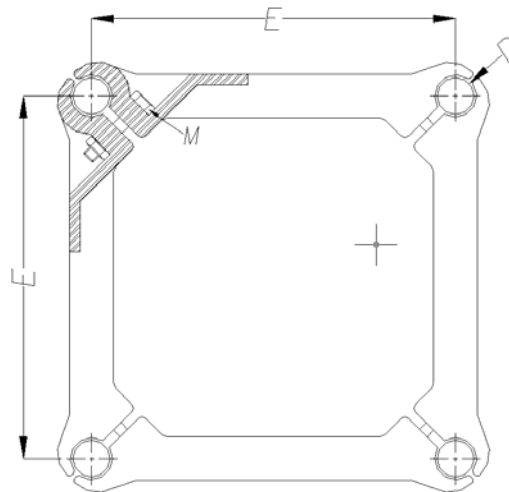


Fig. 5- Spacer for triple linear conductor



Rectangular spacer

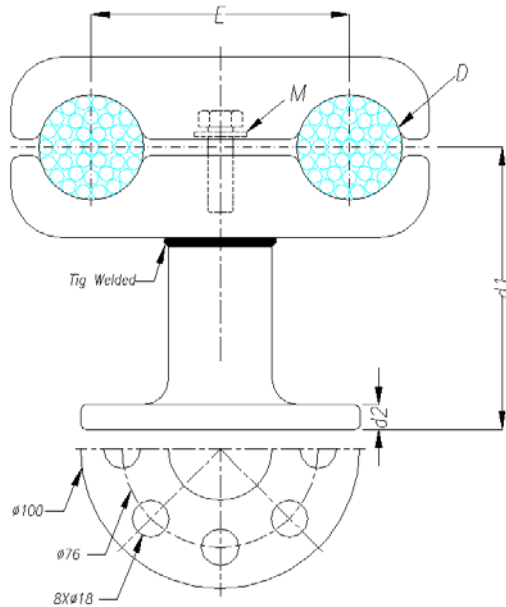
PART No.	Dimensions in mm			Net Weight Kg / unit.
	Ø	E	M	
	D			
<b>Fig. 6</b>				
C 196 SPQ 20	18.0- 19.6	200	10	
C 214 SPQ 20	19.7- 21.4	200	10	
C 229 SPQ 20	21.5- 22.9	200	10	
C 244 SPQ 20	23.0- 24.4	200	10	
C 260 SPQ 20	24.5- 26.0	200	10	
C 280 SPQ 20	26.1- 28.0	200	10	
C 300 SPQ 20	28.1- 30.0	200	10	
C 322 SPQ 20	30.1- 32.2	200	10	
C 335 SPQ 20	32.3- 33.5	200	10	
C 350 SPQ 20	33.6- 35.0	200	10	
C 361 SPQ 20	35.1- 36.1	200	10	
C 383 SPQ 20	36.2- 38.3	200	10	
C 400 SPQ 20	38.4- 40.0	200	10	
C 415 SPQ 20	40.1- 41.5	200	10	



**Fig. 6- Rectangular spacer**



PART No.	Dimensions in mm					Net Weight Kg / unit.
	$\varnothing$ D	E	d1	d2	M	
<b>Fig. 6</b>						
C 196 SP10 F10	18.0- 19.6	100	110	10	10	
C 214 SP10 F10	19.7- 21.4	100	110	10	10	
C 229 SP10 F10	21.5- 22.9	100	110	10	10	
C 244 SP10 F10	23.0- 24.4	100	110	10	10	
C 260 SP10 F10	24.5- 26.0	100	110	10	10	
C 280 SP10 F10	26.1- 28.0	100	110	10	10	
C 300 SP10 F10	28.1- 30.0	100	110	10	10	
C 322 SP10 F10	30.1- 32.2	100	110	10	10	
C 335 SP10 F10	32.3- 33.5	100	110	10	10	
C 350 SP10 F10	33.6- 35.0	100	110	10	10	
C 361 SP10 F10	35.1- 36.1	100	110	10	10	
C 383 SP10 F10	36.2- 38.3	100	110	10	10	
C 400 SP10 F10	38.4- 40.0	100	110	10	10	
C 415 SP10 F10	40.1- 41.5	100	110	10	10	





PART No.	Dimensions in mm					Net Weight Kg / unit.
	$\varnothing$ D	E	d1	d2	M	
<b>Fig. 6</b>						
C 196 SP10 F16	18.0- 19.6	100	110	10	10	
C 214 SP10 F16	19.7- 21.4	100	110	10	10	
C 229 SP10 F16	21.5- 22.9	100	110	10	10	
C 244 SP10 F16	23.0- 24.4	100	110	10	10	
C 260 SP10 F16	24.5- 26.0	100	110	10	10	
C 280 SP10 F16	26.1- 28.0	100	110	10	10	
C 300 SP10 F16	28.1- 30.0	100	110	10	10	
C 322 SP10 F16	30.1- 32.2	100	110	10	10	
C 335 SP10 F16	32.3- 33.5	100	110	10	10	
C 350 SP10 F16	33.6- 35.0	100	110	10	10	
C 361 SP10 F16	35.1- 36.1	100	110	10	10	
C 383 SP10 F16	36.2- 38.3	100	110	10	10	
C 400 SP10 F16	38.4- 40.0	100	110	10	10	
C 415 SP10 F16	40.1- 41.5	100	110	10	10	

