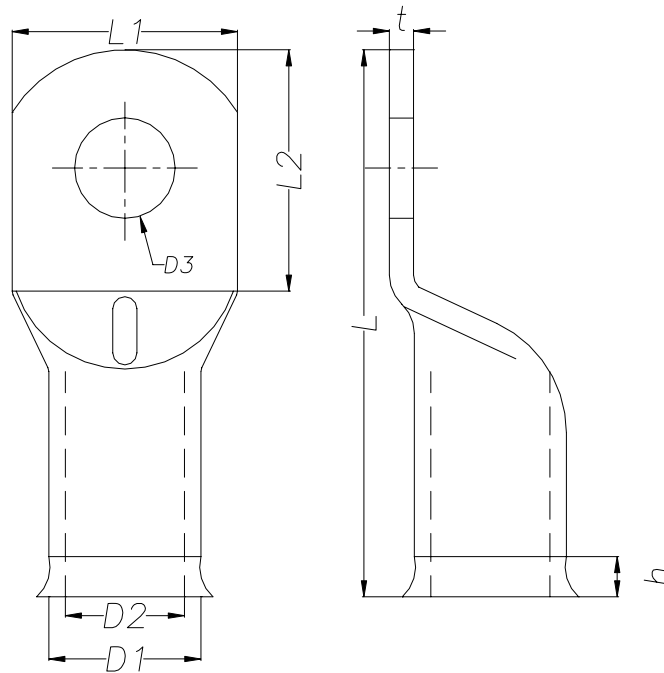




CABLE LUG FOR COPPER COND.

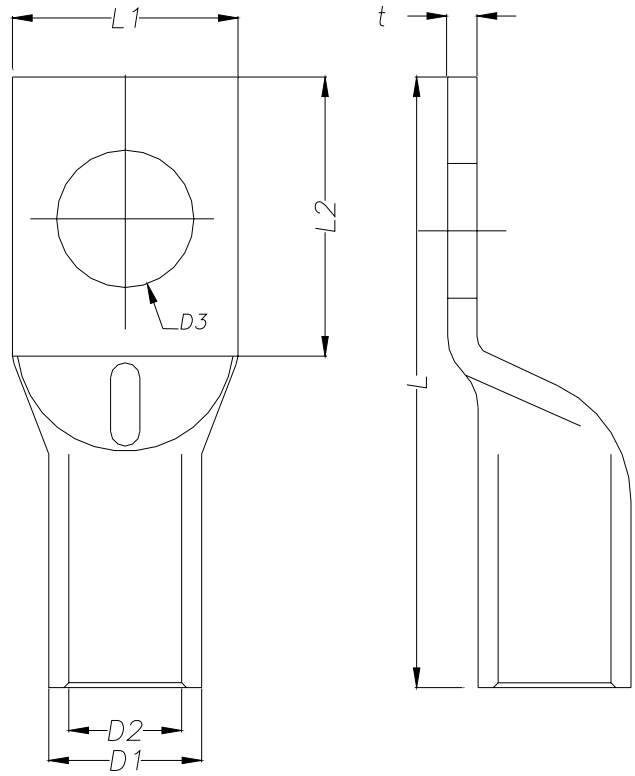
PART No.	Dimensions in mm									Net Weight Kg / unit.
	Φ			L	L1	L2	h	t		
	D1	D2	D3							
<b>Fig. 1-</b>										
ZC.120.18	23	15	18	73	28	33	5	5		
ZC120	23	15	14.5	73	28	33	5	5		
ZC70		11.5	14	63.8	23	33		5		
ZC1000		45	21	275	80	65				
ZC800		40		275	80	65				
ZC630		33.4	35	150	61	60				
ZC500/C		29.3	14	150	56	60				
ZC400	32	27	16.5	105	47	48	5	5		
ZC400.22	32	27	22	105	47	48	5	5		
ZC.400.18	32	27	18	105	47	48	5	5		
ZC.400.14	32	27	14.5	105	47	48	5	5		
ZC400.H19		27	14							
ZC400		27	16.5							
ZC300	28	23	14	89	41	33	5	5		
ZC240	26	21	16.5	91	37	39	5	5		
ZC185	23.5	18.5	14.5	80	33	33	5	5		
ZC150	21.5	10.5	22	78	30	33	5	5		
ZC.120.22		15	22	73	28	33	5	5		
ZC400H18		27	20							
ZC400H12		27	22							
ZC400H11		27	14.5							
ZC300H19		23	14							
ZC300H17		23	18							
ZC300H16/1		23	16.5							
ZC185H18		18.5	20		33	33				
ZC185H17		18.5	18		33	33				
ZC185H14		18.5	14							
ZC185H12		18.5	22							
ZC120H19		15	14							
ZC120H17		15	18							
ZC120H13		15	12							
ZC120H12		15	22							
ZC800H18		40	20	275	80	65				





**CABLE LUG FOR COPPER COND.**

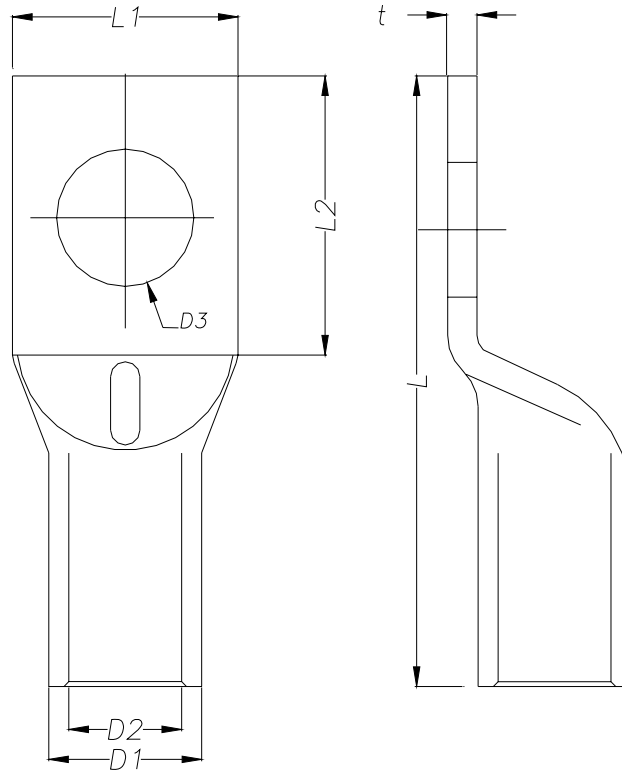
PART No.	Dimensions in mm							Net Weight
	Φ			L	L1	L2	t	
	D1	D2	D3					Kg / unit.
<b>Fig. 1-</b> ZC240H12	26	21	22				5	





CABLE LUG FOR AL COND.

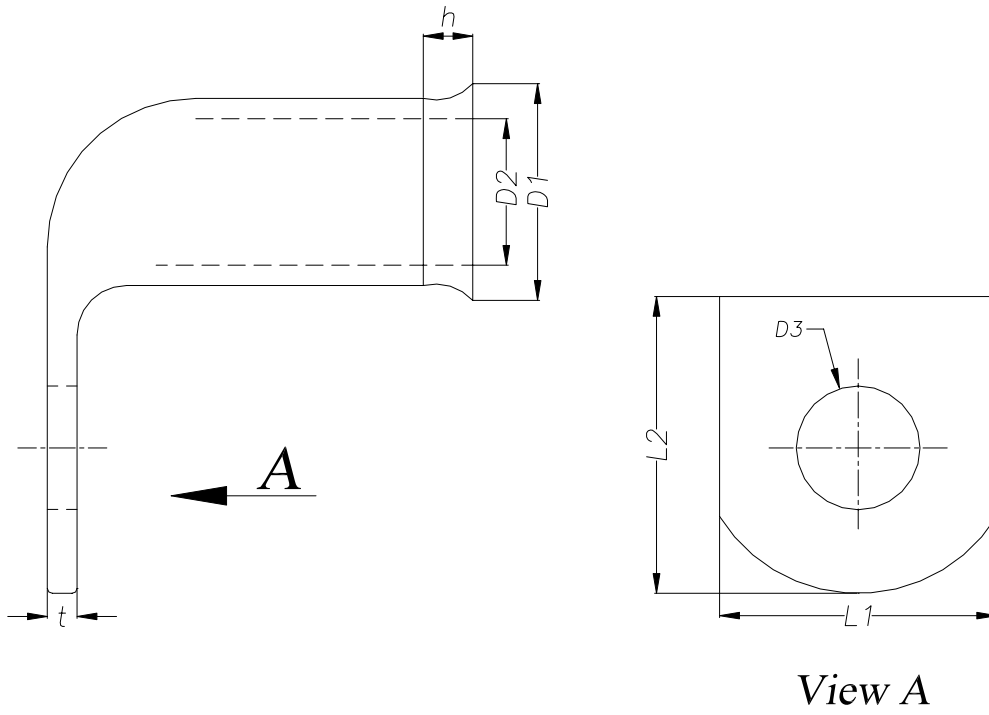
PART No.	Dimensions in mm							Net Weight	
	Φ			L	L1	L2	t	Kg / unit.	
	D1	D2	D3						
<b>Fig. 1-</b>									
ZC70A1	20	11	16	101	42	43			





90° CABLE LUG FOR COPPER COND.

PART No.	Dimensions in mm							Net Weight
	Φ			L1	L2	h	t	
	D1	D2	D3					
<b>Fig. 1-</b>								
ZC120	23	15	14.5	28	33	5	5	
ZCL300H17		23	18					
ZCL240	26	21	16.5	37	39			
ZCL12	13	15	14.5	28	33	5	5	
ZCL400	32	27	16.5	47	48		5	

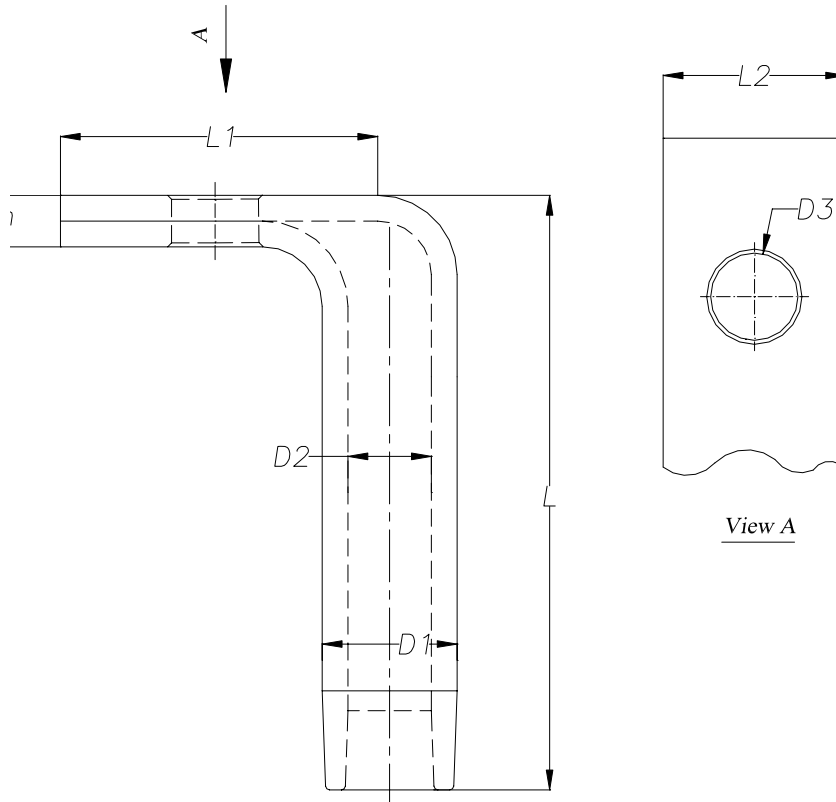


View A



90° CABLE LUG FOR AL COND.

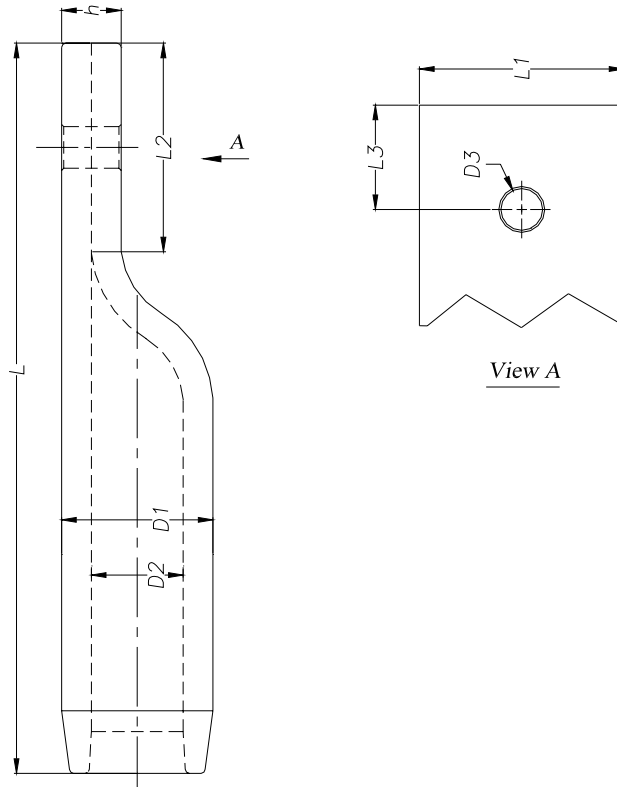
PART No.	Dimensions in mm							Net Weight
	Φ			L	L1	L2	h	Kg / unit.
	D1	D2	D3					
<b>Fig. 1-</b>								
ZCL240ALH11	34	21	14	150	80	46		
ZCL1000ALH19	72.5	44	14	200	100	98	28	
ZCL240ALH12	34	21	22	150	80	46		





**CABLE LUG FOR AL COND.**

PART No.	Dimensions in mm								Net Weight
	Φ			L	L1	L2	L3	h	Kg / unit.
	D1	D2	D3						
<b>Fig. 1-</b>									
ZC1000ALH19	72.5	44	14	350	98	100	50	28	
ZC1000ALH18	72.5	44	20	350	98	100	50	28	
ZC625ALH18	50	34	20	270	68	100	50	16	
ZC625ALH17	50	34	18	270	68	100	50	16	
ZC500ALH19	50	31	14	280	67	90	45	19	
ZC450ALH19	46	29.5	14	280	63	90	45	16	
ZC400B-1	46	29.5	16	260	63	95	45	16	
ZC400H17	46	29.5	18	260	63	90	45	16	
ZC400ALH16	46	29.5	16	260	63	90	45	16	
ZC400ALH11	46	29.5	14.5	260	63	90	45	16	
ZC800ALH16	58	30	16	270	80	100	50	19	
ZC240ALH210/3	34	21	16	230	46	80	25	13	
ZC240ALH18	34	21	20	230	46	80		13	
ZC240ALH17	34	21	18	230	46	80		13	
ZC240ALH16	34	21	16	230	46	80		13	
ZC240ALH11	34	21	14.5	230	46	80		13	





**CABLE LUG FOR AL COND.**

PART No.	Dimensions in mm					Net Weight			
	$\Phi$			L	L1	L2	L3	h	Kg / unit.
	D1	D2	D3						
<b>Fig. 1-</b>									
ZC625ALH26	50	34	14	270	68	100	45	16	
ZC400ALH26	46	29.5	14	260	63	100	50	16	

